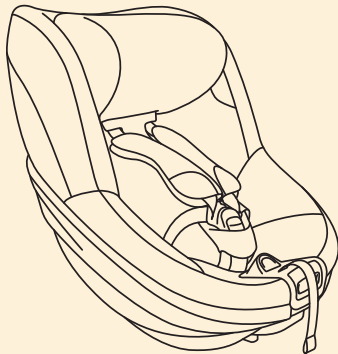






Quick Guide

BeSafe®





BeSafe Beyond

-  Rear facing
-  61 - 125 cm
-  From 6 months until 6 years
-  Max. weight: 22 kg

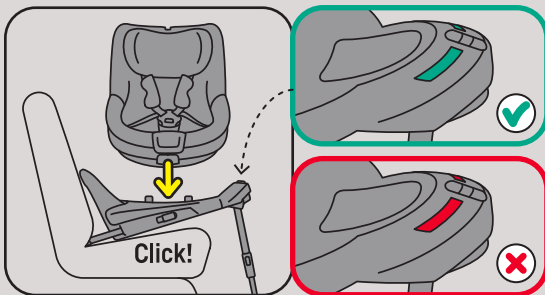


<https://hello.besafe.com/en/support/besafe-beyond>

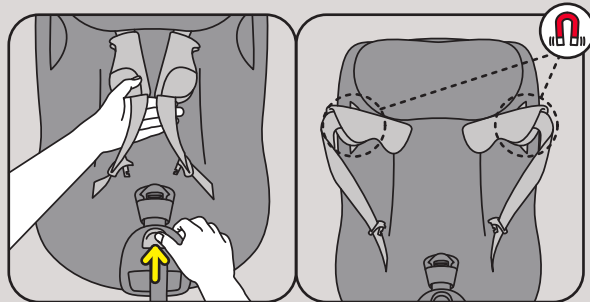
support.global@besafe.com 
www.besafe.com 

! Safety steps:

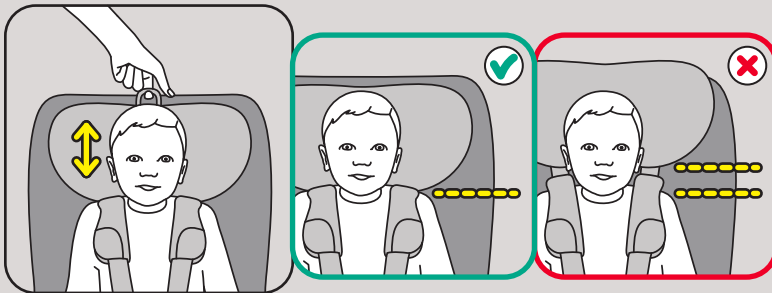
1 Place the seat



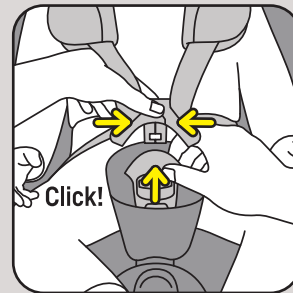
2 Loosen the harness



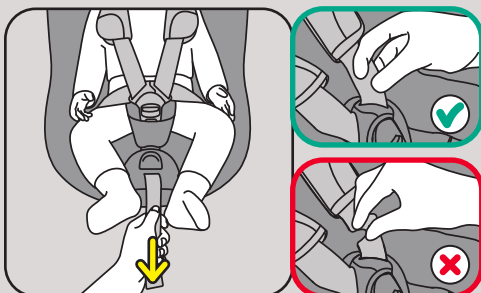
3 Adjust the headrest height



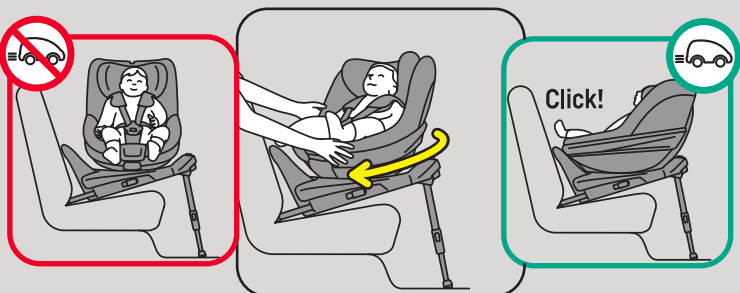
4 Close the harness



5 Tighten the harness



6 Move the seat to driving direction

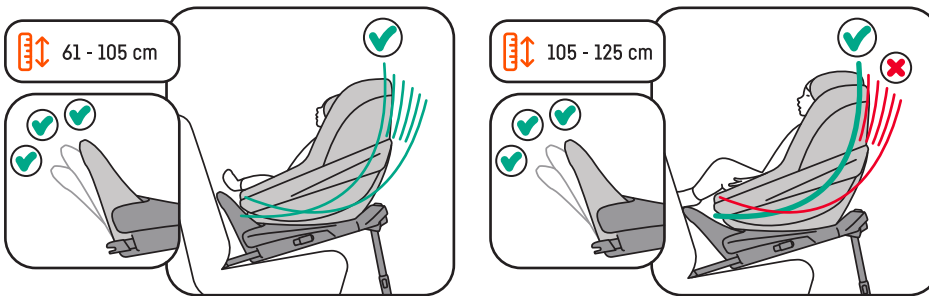


Optional steps:

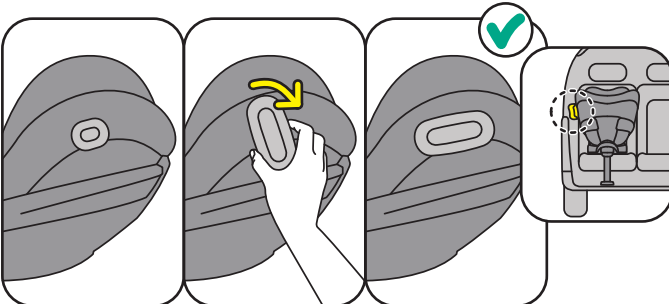
Rotating the seat



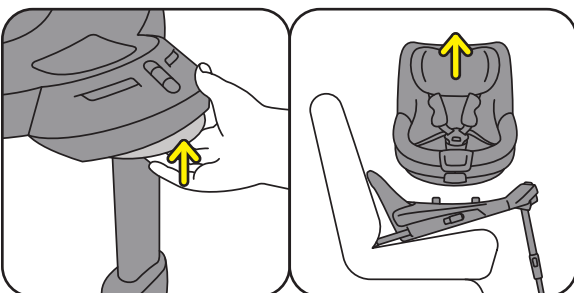
Reclining the seat



Attaching the SIP+



Removing the seat from the base



This Quick Guide is made of polypropylene.
Please recycle according to your local regulations.